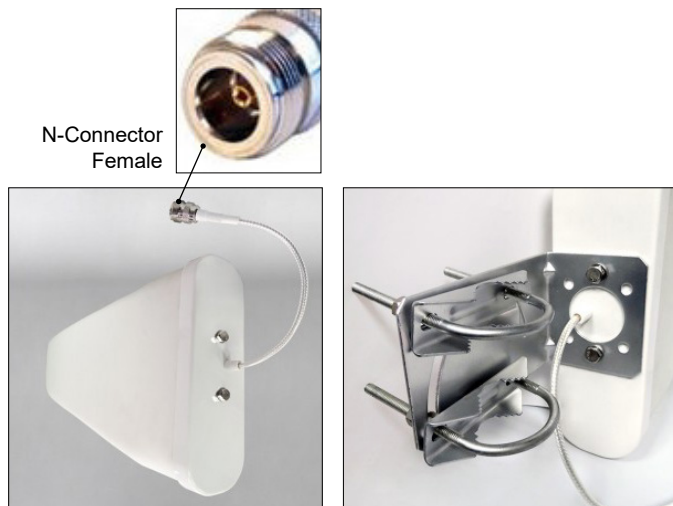


The **11Bi Yagi Antenna, 900MHz/2.4GHz, Dual Band** (P/N 5982) is a highly directional antenna, with a 35° Beam width. Yagi antennas focus most of their energy forward producing a highly directional, narrow beam. It is a good choice for very long range broadcasts to fixed targets. These antennas can be used for indoor or outdoor projects.

The 5982 Yagi Antenna comes with a mounting bracket and an attached 6" lead with an N-Connector, Female. To connect to Multiverse SHoW Baby, Multiverse Node, Multiverse Studio Receiver, Multiverse Transmitter, Multiverse Vero Transceiver, or legacy SHoW DMX Neo Tx or Rx, this antenna requires a P/N 5638 Antenna Adapter Cable. Connecting to legacy SHoW DMX Vero devices requires a P/N 5641 Antenna Adapter Cable.

When using high gain antennas, be certain the EIRP of your system is within permissible limits of your local regulatory body.



SPECIFICATIONS:

P/N	Frequency
5982	900MHz/2.4GHz

Physical	
Length	410mm (16.1 in)
Width	210mm (8.3 in)
Depth	65mm (2.6 in)
Antenna Weight	0.9kg (2.0lbs.)

Electrical	
Antenna Type	Broadband, high directive antenna, for outdoor reception
Frequency Range	902~928 / 2400~2480MHz
V.S.W.R.	<= 1.5
Impedance	50 OHM
Frequency/Gain	1902~928MHz: 11dBi 2400~2480MHz: 11dBi
Polarization	Vertical
Identifying Connector	N-Connector, Female

Product Information	
Color	White
Use Environment	Indoor/Outdoor
Operating Temperature Range	-40°C to + 60°C
IP Rating	IP63
Warranty	One year

Radiation Patterns:

