



Photo Courtesy of Nick Fazio and American Dream

PROJECT SNAPSHOT

Project Name: QolorFLEX NuNeon® at the Mirror Maze at American Dream
Location: East Rutherford, New Jersey
Completion Date: October 1, 2023
Lighting Designer/Programmer: Nick Fazio, American Dream
Lighting Package: 4Wall NY
City Theatrical Solution(s): [QolorFLEX NuNeon, RGB, QolorFLEX® 5x8A Dimmers](#)

MIRROR MAZE

The Mirror Maze at American Dream is a house of mirrors with interactive neon lights, electric beats, endless corridors, and clever turns around each corner. This attraction encourages guests to navigate their way through a mind-blowing landscape.

CASE STUDY Q&A WITH NICK FAZIO OF AMERICAN DREAM:

City Theatrical (CT): Hi Nick! Can you tell us more about this QolorFLEX NuNeon installation?

Nick Fazio (NF): We installed the 30 feet of QolorFLEX NuNeon, RGB within six acrylic tubes at the Mirror Maze attraction at American Dream. This attraction is located in the Merlin Court next to the Sea Life attraction.

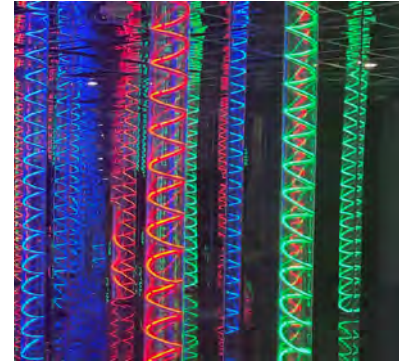
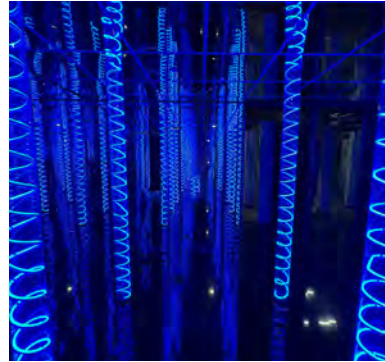
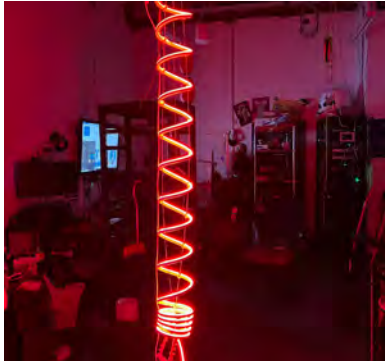
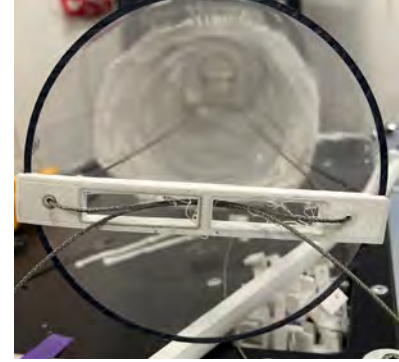
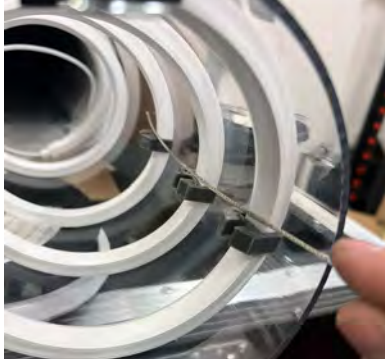
CT: How did you use QolorFLEX NuNeon in this design?

NF: We replaced existing tubes that had failing 120v LED rope light in them with the new acrylic tubes that encased QolorFLEX NuNeon. The older led rope was overheating and causing the existing tubes to crack. Since the update to QolorFLEX NuNeon, we have also started using QolorFLEX 5x8A Dimmers to program the new areas as well as the rest of the mirror maze lighting to change lighting based on the different songs playing, which depends on the season.

CT: Tell us more: Is the lighting in the maze interactive?

NF: The lighting pulses with the music. We are using Xlights, a “Christmas light editor”, to run the overhead lights as well as change the pole colors to align with the music. The entire setup is controlled by a Raspberry Pi 4, which is outputting DMX





Photos Courtesy of Nick Fazio and American Dream

as well as taking input from firealarm and E-stop button to turn lights to white, play a scripted audio, and illuminate the floor to help visitors get out of the maze.

CT: What was your installation like?

NF: We created custom 3D printed brackets, which were attached to the QolorFLEX NuNeon using silicone at 12-inch increments. We then tensioned the pieces between two 1/16" aircraft cables.

CT: What were some of the unique challenges that affected the installation?

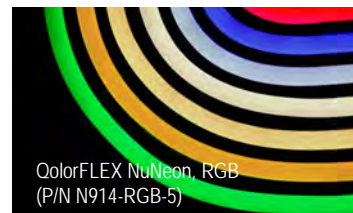
NF: The most challenging aspect of the QolorFLEX NuNeon installation was getting the 30 feet of the product to lay out neatly and evenly space it within the confines of a 6-inch pipe.

CT: Did any unique testing go into choosing or installing QolorFLEX?

NF: We didn't do much testing. I have been a longtime supporter and user of City Theatrical solutions. I had used QolorFLEX NuNeon previously and knew that it was the right product for the job.

CT: What was it like to work with QolorFLEX NuNeon?

NF: QolorFLEX NuNeon was very easy to work with. QolorFLEX NuNeon has significantly increased the wow factor in this part of the mirror maze. The vibrant colors bouncing off the many mirrored panels looks amazing.



QolorFLEX NuNeon, RGB (P/N N914-RGB-5)



QolorFLEX 5x8A Dimmer (P/N 5809)

“QolorFLEX NuNeon was very easy to work with. QolorFLEX NuNeon has significantly increased the wow factor in this part of the mirror maze. The vibrant colors bouncing off the many mirrored panels looks amazing.”

- Nick Fazio, Lighting Designer, American Dream

Other Areas in American Dream that use City Theatrical Products:



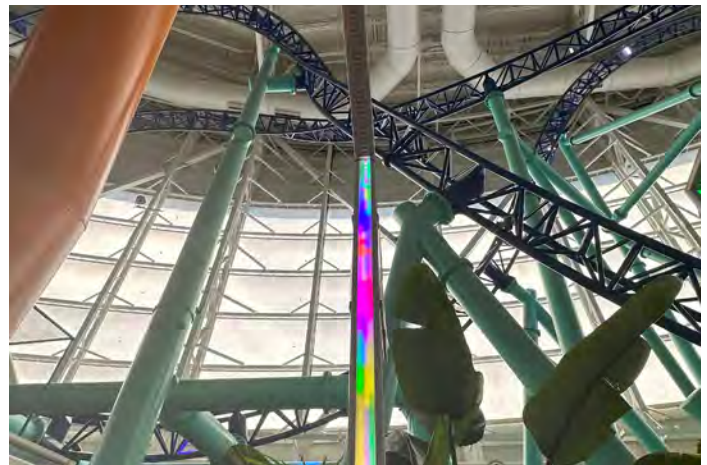
American Dream's Nickelodeon Theme Park includes QolorFLEX LED tape as backlighting, color-changing to orange



American Dream's Nickelodeon Theme Park includes QolorFLEX LED tape as backlighting, color-changing to slime green



American Dream's Nickelodeon Theme Park includes custom cut QolorPIX Pixel Controlled LED Tape panels on 68 light posts, red



American Dream's Nickelodeon Theme Park includes custom cut QolorPIX Pixel Controlled LED Tape panels on 68 light posts, multicolor



American Dream's Nickelodeon Theme Park includes Multiverse Transmitters to transmit wireless DMX to the QolorPIX Tape Controllers controlling the QolorPIX Pixel Tape vertically applied to the main beams



American Dream mall's staging area includes Multiverse Nodes for wireless DMX lighting control from the second level