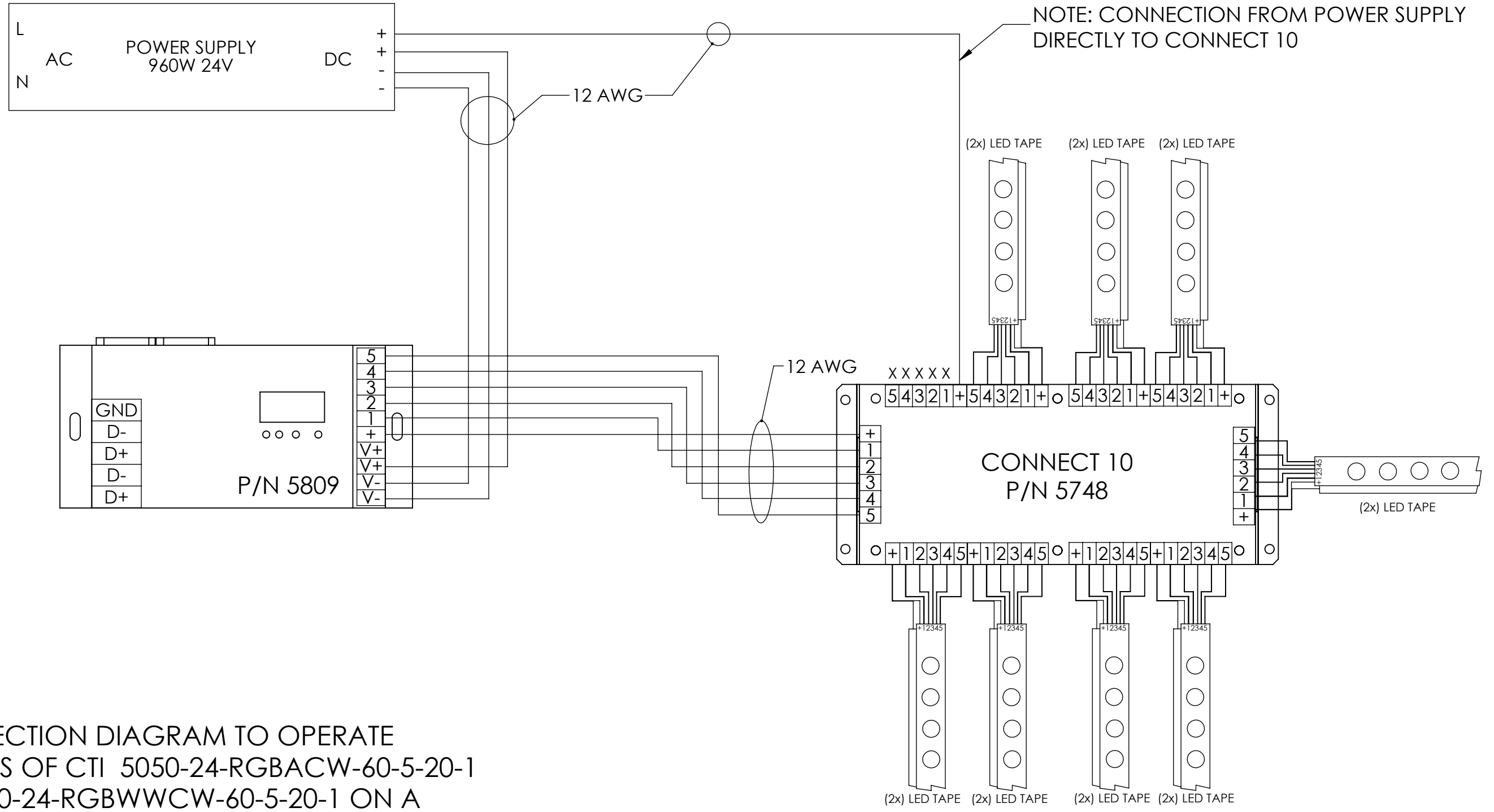


8 7 6 5 4 3 2 1

D
C
B
A



CONNECTION DIAGRAM TO OPERATE
16 REELS OF CTI 5050-24-RGBACW-60-5-20-1
OR 5050-24-RGBWWCW-60-5-20-1 ON A
CTI 5748, AND A 960W 24V POWER SUPPLY.

BY	NAME	DATE	<p align="center">CITY THEATRICAL INC</p> <p>475 BARELL AVENUE, CARLSTADT, NJ 07072 800/230/9497 201/549/1160 201/549/1161 FAX</p>
APPROVED			
MATERIAL			
FINISH			
TOLERANCE			
ALL DIMENSIONS IN			
<p align="center">PROPRIETARY AND CONFIDENTIAL</p> <p>THE INFORMATION CONTAINED IN THIS DRAWING IS THE SOLE PROPERTY OF CITY THEATRICAL, INC. ANY REPRODUCTION IN PART OR AS A WHOLE WITHOUT THE WRITTEN PERMISSION OF CITY THEATRICAL, INC. IS PROHIBITED.</p>			<p>TITLE:</p>
<p>SIZE DWG. NO.</p> <p>B 5748 to 5809</p>		<p>REV</p>	<p>SCALE: 1:2</p>
			<p>SHEET 1 OF 1</p>

8 7 6 5 4 3 2 1